



# TECHNICAL SPECIFICATION

Subject to Change

**TABLE OF CONTENTS**

General:		Page 3
	Location	Page 3
	Transport	Page 3
	Local Amenities	Page 4
The Studio:	Dance Floor	Page 4
	Measurements and Plan	Page 5
	Fabric Wall	Page 6
	Circus Equipment	Page 6
	Toilet and Shower Facilities	Page 6
	Laundry Facilities	Page 6
	Wi-Fi	Page 6
	Audio Visual	Page 6
	Onsite Facilities	Page 6
	Access hours	Page 6
	Access	Page 6
Technical Supply:	Power	Page 7
	Electrical Sockets Plan	Page 7
	Rigging Information	Page 8
	3D Rigging Plan	Page 8
	RSJ Plan	Page 9
	Truss	Page 10
	Tools	Page 10
	Insurance, Health and Safety	Page 10
	Equipment list	Page 10

## General:

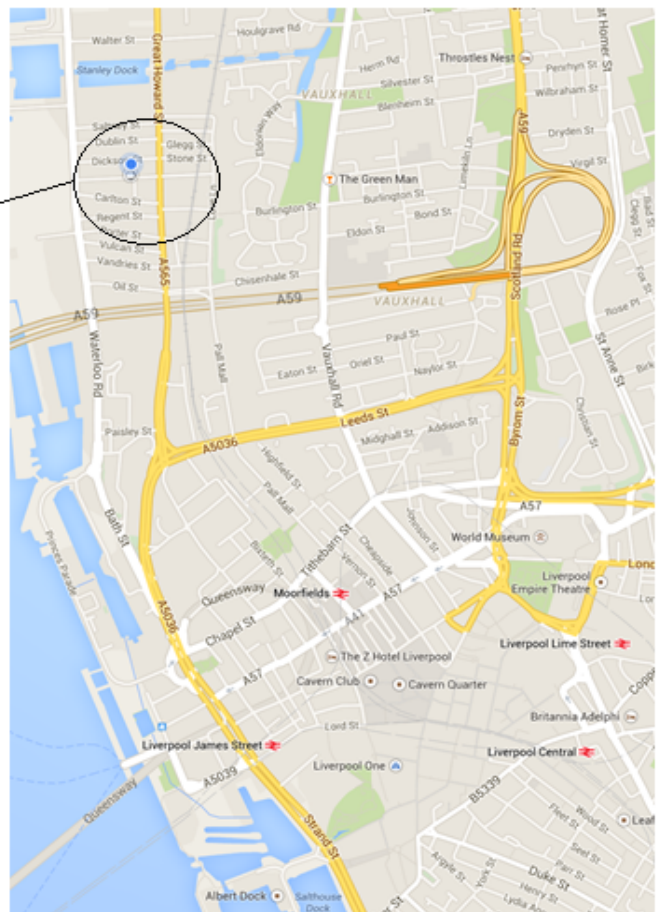
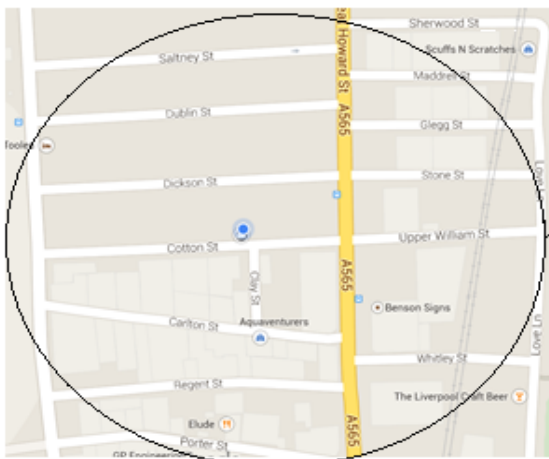
The Higher Space has been a long-time dream of both directors, Wendy and Jamie Ogilvie. They moved into the space over 8 years ago and have been on an exciting journey ever since with highs and lows. The Journey began working on a large indoor aerial project called 'THE ELEMENTS'. The biggest issue that the Liverpool based project had was where to create and rehearse. Over a period of 3 months they finally found the dilapidated and messy warehouse just off the dock road.

Although it was messy and not what you would call an aerial centre of excellence they could see the potential and spent the next 6 years developing the space with their own time, dedication and money. Now in their 9<sup>th</sup> year they have created over 10 shows, provided aerial workshops to people from all over the world, survived a flood and recently completed a brand new refurbishment scheme which saw the installation of new heaters, a new roller shutter and full insulation to the entire building as well as an overall face lift.

The Higher Space is a No-Smoking venue including E-Cigarettes. Please smoke outside the building.

## Location

10 Cotton Street, Liverpool, L3 7DY - The Higher Space is just off the A565 - Great Howard Street.



## Transport

If driving the above postcode will take you directly to The Higher Space. Cotton Street has free on street parking however this street can get very busy during the day.

There is also plenty of free parking along the water front on Waterloo Road a 3 minute walk away.

The closest National Rail Train Station is Moorfields and is around a ten minute walk away.

If traveling into Liverpool Lime Street we recommend either walking which should take around 25 minutes through the city centre or taking a 5 minute taxi ride which should cost around £6.00.

There are also a number of bus stops close by.

### **Local Amenities**

The Higher Space is located very close to a Petrol Station with a SPAR Supermarket on Great Howard Street. They have a full range of groceries, Sandwiches and hot and cold snacks including an express Costa Coffee machine. This is only a 3 minute walk from The Higher Space.

Eileen's Café is located 2 minutes' walk from The Higher Space for those wanting hot and cold food. Eileen's is open from 06:00 – 14:00 on weekdays and 07:00 – 12:00 on weekends and located on the corner of Carlton Street and Great Howard Street.

A Subway and Fish and Chip shop are also located close by on Derby Road if walking away from town down Great Howard Street. These are approximately a ten minute walk away and located on the corner of Derby Road and Boundary Street. There is parking outside.

There are a number of Hotels located close by.

The new Titanic Hotel is a new luxury hotel a short five minutes' walk away from The Higher Space at Stanley Dock, Regent Road, Liverpool L3 0AN. With full Spa, Restaurant and Bar this is also a perfect place to arrange business meetings in a pleasant atmosphere close by.

Malmaison is also a very nice hotel located at 7 William Jessop Way, Liverpool, L3 1QZ and around a 12 minute walk away from The Higher Space. As well as accommodation Malmaison has a Restaurant and Bar.

The closest Travelodge Hotel is located very close to Morefields Station at 38 Exchange Street East, L2 3PS. This Travelodge recently opened in summer 2014. There are also other Travelodge Hotel's available in Liverpool if this is fully booked.

## **The Studio**

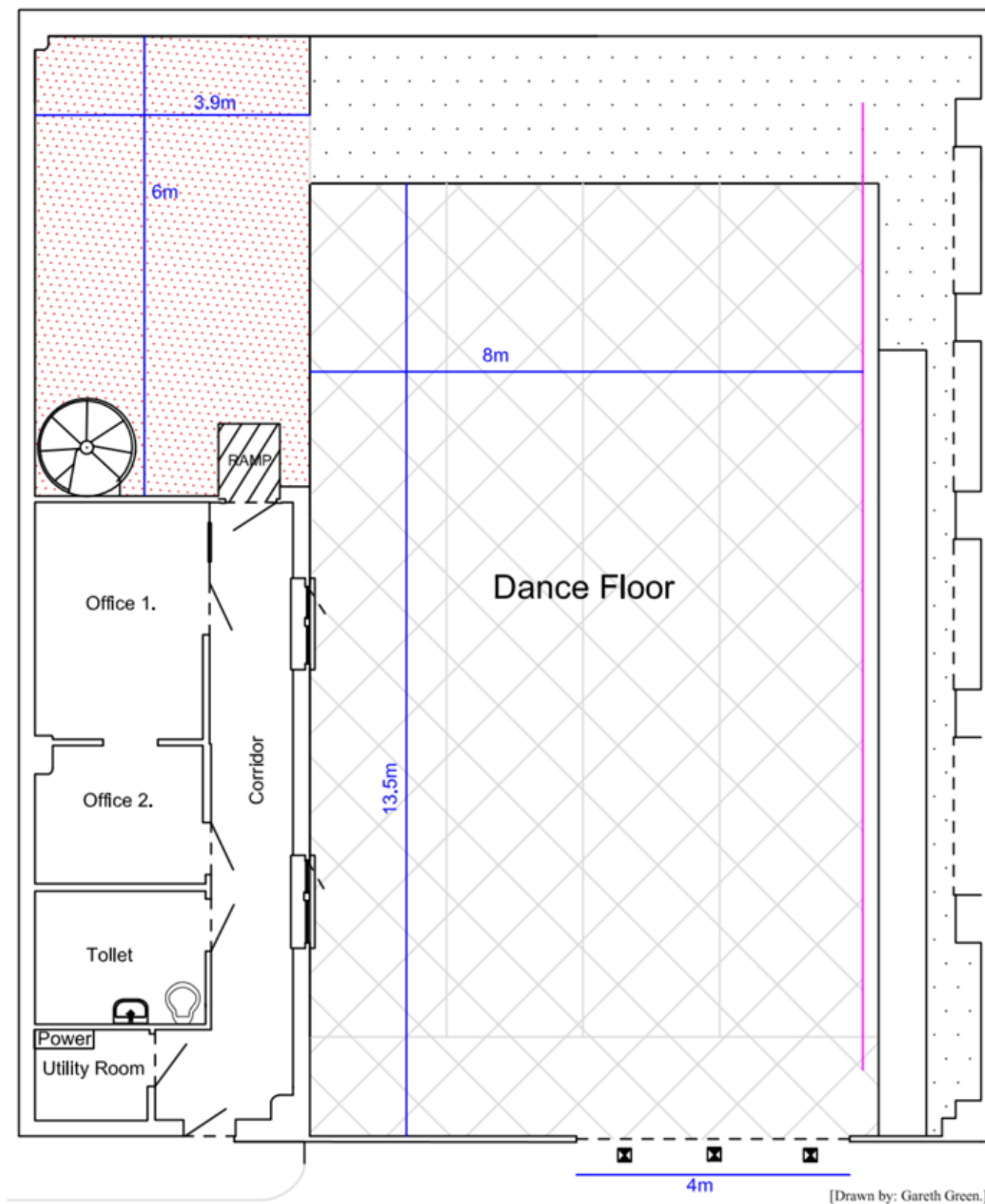
### **Dance Floor**

The Higher Space has a semi-sprung dance floor and covered in a black dance floor matting. This makes it ideal for dance rehearsals of all styles and is very hard wearing. Most types of shoes and footwear can also be worn on the dance floor although we ask that no high heel shoes or stilettos.

The dance floor is able to take high loads and so it is ideal for set, scenery and truss structures. If using structures on the dance floor we ask that you also use packers to spread the weight and also protect the dance floor. The dance floor measures 13.5m x 8m.

**Measurements**

Please see the ground plans for the measurements of the space. If you require further information or specific information please contact us.



**Fabric wall**

The Hire Space has a permanently rigged PVC tensioned training wall. This measures 15m across by 7m high. The wall is perfect for practicing Vertical Wall Work due to the low impact surface. If you would like to use this wall please make us aware at the time of your booking. We also ask that no shoes are worn whilst working on the wall and that when in bare feet no nail varnish is to be worn as this will mark the fabric surface.

If you require this wall to be de-rigged before your booking this must be discussed beforehand.

The Higher Space also has a 6m x 6m fabric wall available for hire which can be used for indoor or outdoor use.

**Circus equipment**

The Higher Space Studio has a separate Circus Section as part of the main space. Within this area there are two rigged counterbalance stations which can be lowered in and out in order to change the equipment very quickly. The Higher Space also has various Silks, Hoops and Trapezes that can be hired during your time in the studio or due to the nature of how this area is rigged it is very simple to swap your own equipment to these points.

In this area there are also three Black Nissen Crash/Landing Mats (2.44m x 1.22m x 305mm). If needed these Mats can also be used elsewhere in the studio.

**Toilet/shower facilities**

The Higher Space has a bathroom with toilet, bath and power shower for your use whilst on site. Should you require either the bath or shower we ask you to provide your own toiletries and towels.

**Laundry facilities**

The Space has a washing machine should you need to wash costumes etc. This is a domestic machine with a wash function only. If you will require to use this please enquire at the time of your booking.

**Wi-Fi**

Wi-Fi is available throughout the building. Please ask a member of the Higher Space Team for the Password and we will be happy to provide this.

**Audio Visual**

The Higher Space has a PA system with a 3.5" Mini Jack lead for you to be able to connect your Computer, Phone or MP3 player directly to the system. If you require further audio needs please enquire at the time of your booking especially if you need to be able to use a CD player or Radio Microphones.

The Higher Space has a wall mounted 47" LG HD television. It is possible to connect your laptop directly via a VGA cable for playback of presentations, DVDs etc. or if using YouTube directly via the Wi-Fi Network. If using a Macintosh computer and wanting to use the VGA cable please make sure you bring a VGA - Mac adaptor.

**Onsite Facilities**

There are Tea and Coffee facilities, a small sink and drinking water available in the main space for you to use whilst in the building.

If you require more facilities than this it is possible for you to also book the Green Room located on the first floor. The Green Room has a fully operational kitchen, dining area and lounge area with more comfortable seating. This is a perfect space for larger groups of people or to have a separate meeting area. If you require the use of the Green Room please request this when enquiring for your booking.

**Access hours**

Normal opening hours are between 09:00 and 17:00 Monday to Friday however exceptions can be allowed and access given. Depending on your booking The Higher Space could have 24 hour access seven days a week and so we are very flexible with the time you need. Access hours will depend on the length of stay and the type of work wanting to be undertaken in the studio.

**Access**

The main studio has an insulated electrical roller shutter door which can be opened and closed as needed.

Once fully open an opening of 4m x 4m becomes available for load-in and load-out of set and other equipment. It is possible to bring vehicle's into the space and onto the dance floor with prior arrangement.

Cotton Street can get extremely busy and so if you require use of the roller shutter we ask for some prior notice so we can cordon an area for your vehicle.

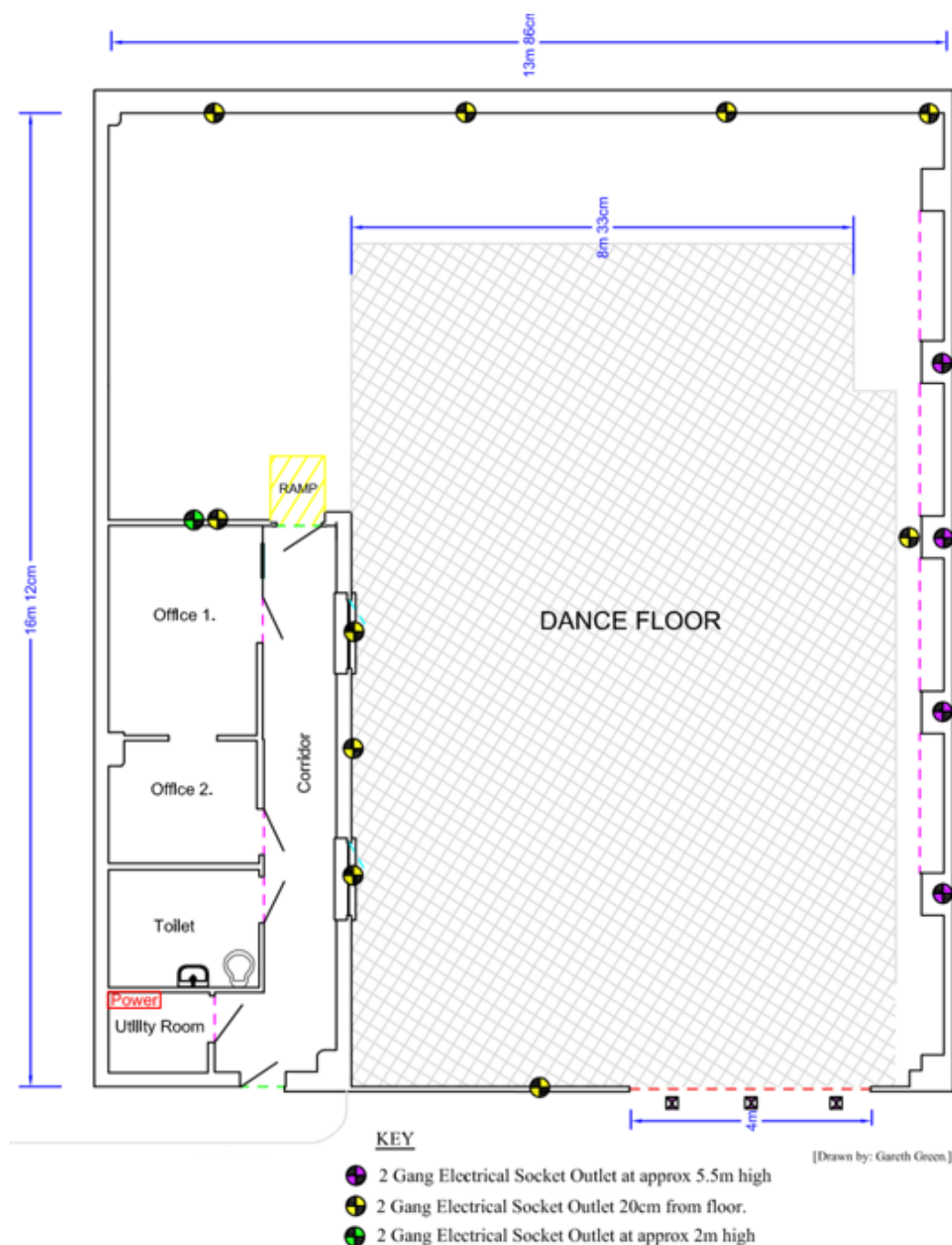
## Technical Supply

### Power

The building has plenty of 13amp power available in various locations throughout the studio, circus area, green room, kitchen and also at height. There are ten two gang 13amp plug sockets located around the studio at floor level, one two gang 13amp plug socket at 2m from the floor and four two gang 13amp plug sockets positioned at height 5.5m from floor level.

Please see the below drawing for these plug socket locations. If you have any other specific power requirements please mention these at the time of your booking enquiry. Please note that The Higher Space does not have 32 or 63amp power available although has contacts for various local power supply companies.

### Electrical Sockets





### **Rigging information**

The Higher Space is home to Wired Aerial Theatre and used by the company to create many of their aerial shows, techniques and rehearsals. The Higher Space has a large stock of aerial equipment; including karabiners, slings, strops, shackles and rope. *(Please see the detailed list below)*

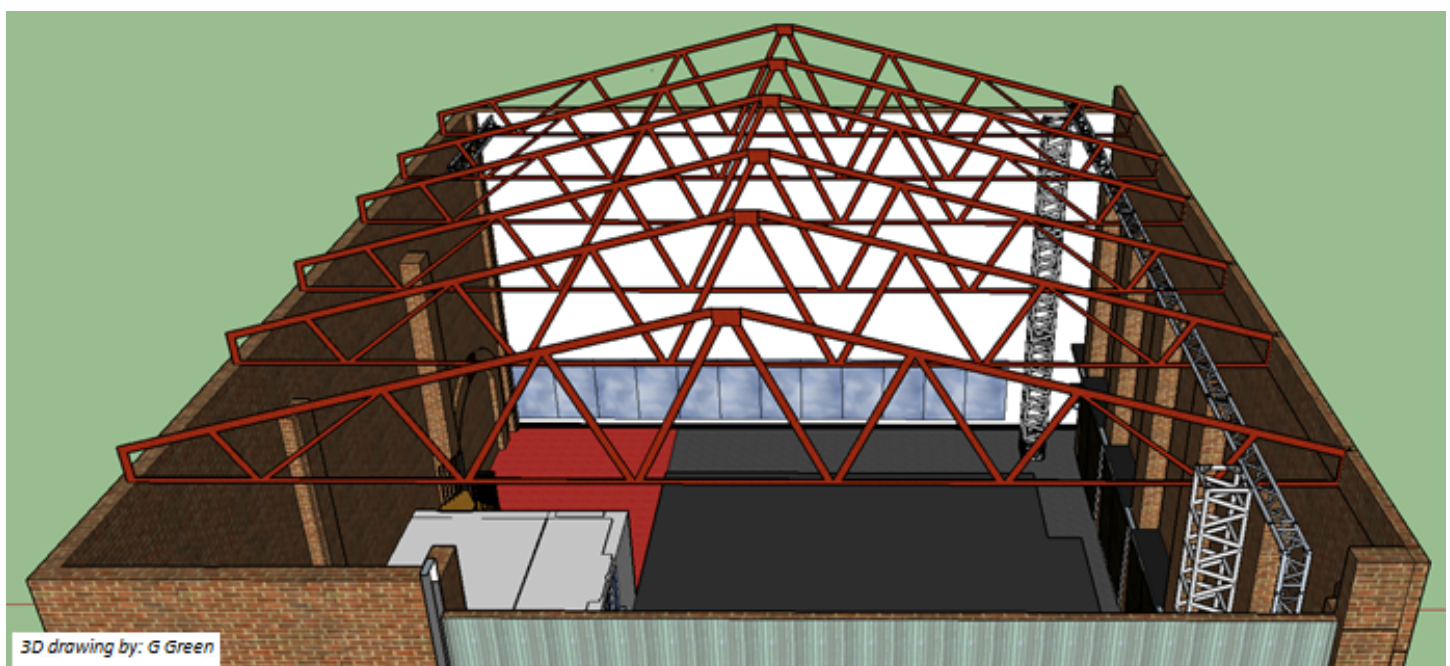
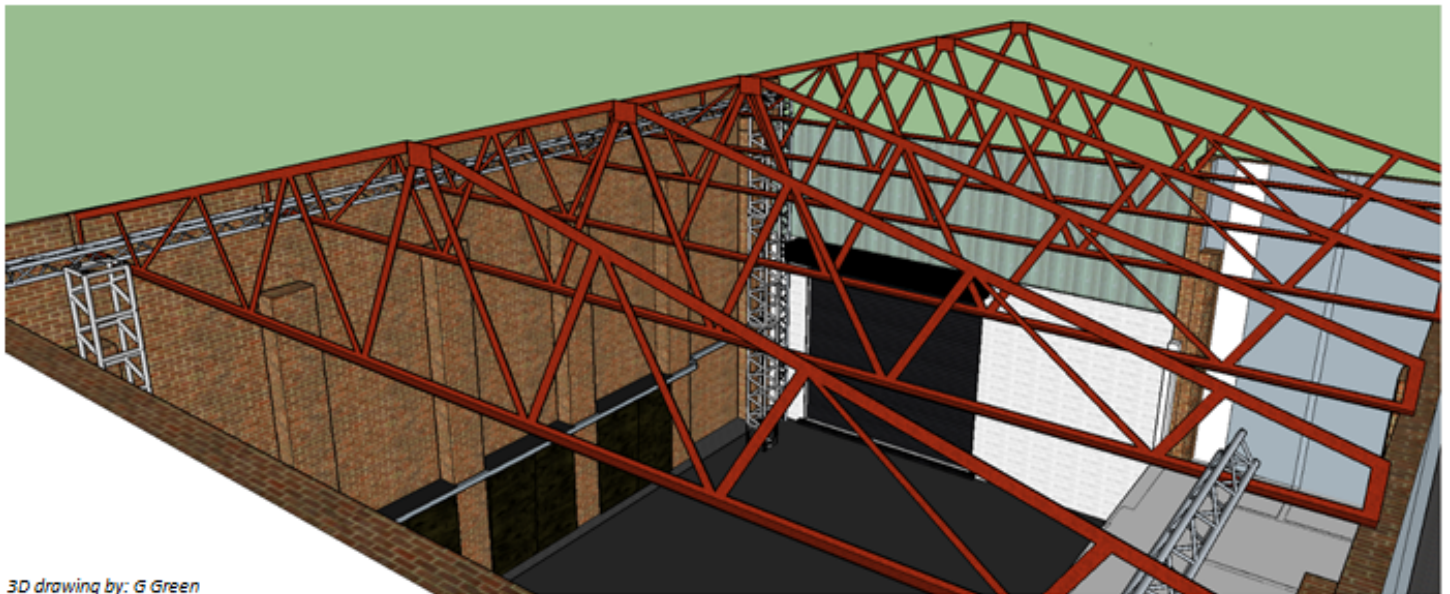
The Higher Space has a team of highly experienced and qualified IRATA and NRC technicians who undertake all of The Higher Space's rigging and aerial installations. They are also available to assist with any rigging requirements that may be required from visiting artists or companies with prior arrangement.

The existing roof beams are easily accessible using rope access techniques or a sub-hired Scissor Lift. The Higher Space is more than happy to assist with this with prior arrangement.

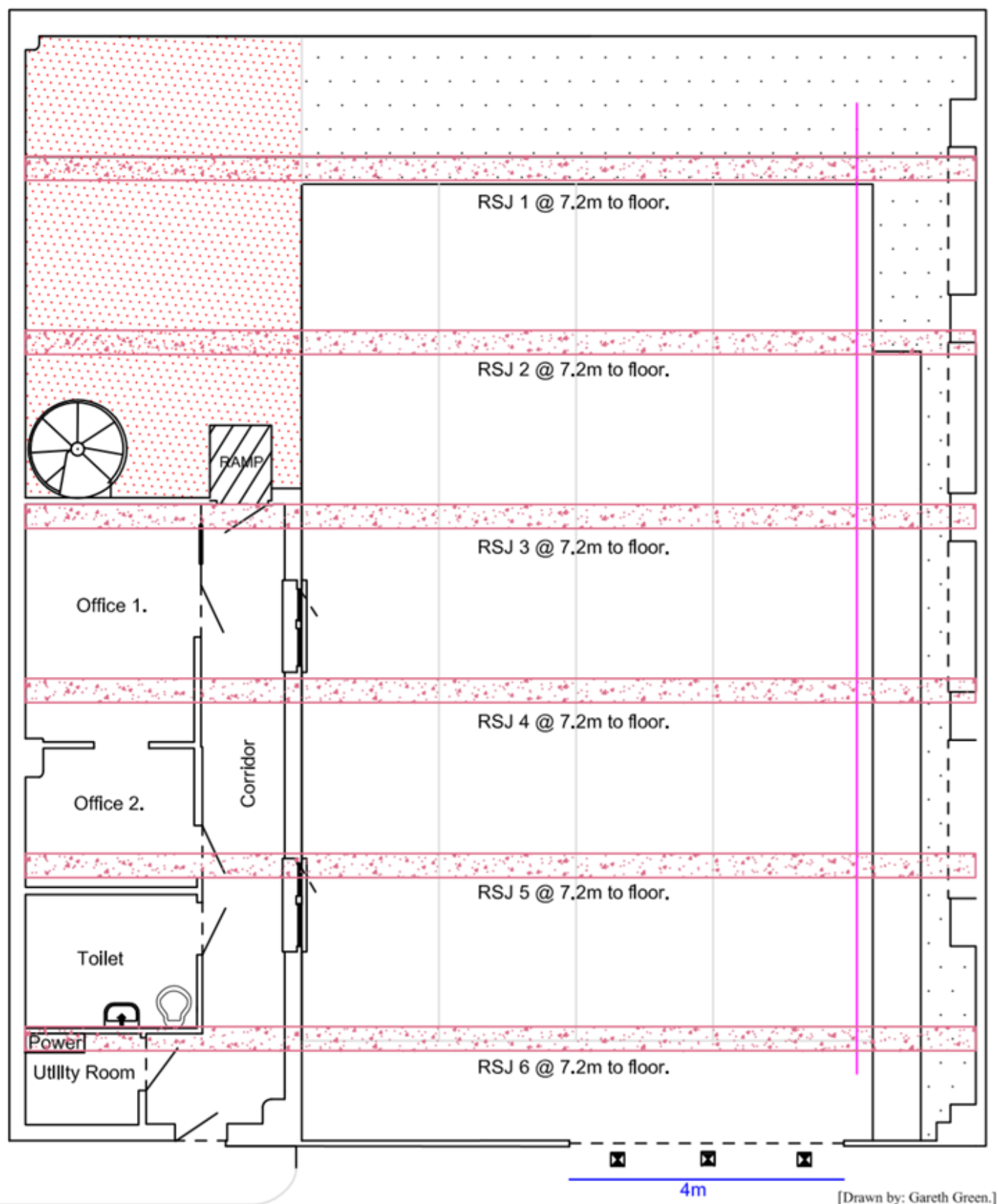
There are six metal A-Frame beams with a proof load of 500kg. These metal A-Frame beams can be used in a variety of ways either singularly or combined. It is advisable that padding is used around the metal A-Frame beams before any textile anchor point is attached to it.

A variety of Ground Support truss structures have also been installed into the space below these A-Frame beams to provide specific points and load requirements.

If you require further information or have specific questions then please contact the Technical department who will be able to deal with your query.







**Truss**

The Higher Space owns a large amount of both Total Fabrications GP52 Box Truss and Total Fabrications XO Triangular Truss. With prior arrangement these trusses can be hired for use during your time in the space. If you require assistance or support using truss this can also be arranged with prior notice. For a full list of Truss available please see the equipment list below.

All our Truss has an up to date 6 month inspection certificate as stated by LOLER.

**Tools**

The Higher Space has a large selection of tools and building equipment. Tools range from Screwdrivers, Hammers, Mallets, Spanners (various sizes), Podgers (various sizes) to power tools such as Impact Wrenches, Drills and Circular Saws. If you require any specific tools or equipment please make us aware of this prior to your booking with ample notice.

**Insurance and Health and Safety**

Wired Aerial Theatre and The Higher Space are insured by Gordon and Co with a Public Liability Policy up to £10,000,000. We strongly recommend that each hirer has their own personal insurance in place.

For hirers that are wanting to build set or use larger structures during the space it will be important to ensure that all health and safety documentation is in place and available.

**Equipment Available**

The following equipment is available for hire from The Higher Space. It is essential that this equipment is booked prior to your arrival so we can ensure its availability. If you unexpectedly require equipment on the day of your hire we will always try our best to make this kit available for you if it is not in use and we are able to do so.

Please note that there is an additional hire charge for this equipment and this is negotiable as part of your booking.

Available hire equipment includes

<b>Item</b>	<b>Total available</b>
<b><u>Truss</u></b>	
Total Fabrications GP52 Box Truss – 2.4m	24
Total Fabrications GP52 Box Truss – 1.2m	7
Total Fabrications GP52 Box Truss – 4 Way Corner Block	8
Total Fabrications GP52 Box Truss – 2 Way Corner Block	2
Total Fabrications XO Triangular Truss – 0.5m	2
Total Fabrications XO Triangular Truss – 1m	2
Total Fabrications XO Triangular Truss – 1.5m	8
Total Fabrications XO Triangular Truss – 2m With Ladder	1
Total Fabrications XO Triangular Truss – 2m	3
Total Fabrications XO Triangular Truss – Corner Section	4
<b><u>Truss Clamps</u></b>	
Doughty Truss Clamp - Fixed 90°	7
Doughty Truss Clamp - Swivel	6
Doughty Truss Clamp - Red I-Bolt	10
<b><u>Scaffolding</u></b>	
Steel Scaffolding Pole – 6m	7
Steel Scaffolding Pole – 5m	2
Steel Scaffolding Pole – 4m	2
Steel Scaffolding Pole – 3m	1
Steel Scaffolding Pole – 2m	5
Steel Scaffolding Pole – 1m	4
Scaffolding Clamp – Fixed 90°	20

Scaffolding Clamp – Swivel	11
Scaffolding Collar	7
Scaffolding Beam Clamp	22
<u>Software</u>	
<i>All the below Strops and Slings lengths are recorded as their working length not their circular length.</i>	
2ton Round Strop – 0.5m	5
2ton Round Strop – 1m	4
2ton Round Strop – 2m	35
2ton Round Strop - 6m	6
Lyon Sewn Sling – 1.2m	50
Lyon Sewn Sling – 1.5m	4
Petzl Dynema Sewn Sling – 30cm	6
Petzl Luna Ladies Harness – Size Small	
Petzl Luna Ladies Harness – Size Medium	
Petzl Luna Ladies Harness – Size Large	
Petzl Adjama Mens Harness – Size Small	
Petzl Adjama Mens Harness – Size Medium	
Petzl Adjama Mens Harness – Size Large	
Petzl Navaho Climbing Harness – Size One	3
Petzl Falcon Climbing Harness – Size One	2
Double Bungee Harness	12
Performers Full Body Harness – Size Small	2
<u>Hardware</u>	
Triangular Maillon Rapide – 10mm	42
Oval Maillon Rapide – 10mm	55
Petzl Attache Screw Gate Karabiner	8
Petzl Am'D Ball-Lock Alloy Karabiner	44
Petzl Spirit Snap Gate Karabiner	6
Groupe Foin D Screwgate Steel Karabiner	20
Petzl Swivel – L	1
Petzl Swivel – S	24
Petzl Jumar – Right Handed	9
Petzl Jumar – Left Handed	1
Petzl GriGri	6
Petzl GriGri 2	11
Petzl Stop	16
Petzl Shunt	5
Petzl Croll & Chest Top	1
Petzl Rescue Pulley	40
MGO Double Action Scaffold Hook	1
Petzl Fixe Pulley	2
Protecta Atlas Single Pulley	3
Barton Single Pulley	70
Bow Shackle – 9.5 ton	1
Bow Shackle – 6.5 ton	4
Bow Shackle – 3 ¼ ton	10
Bow Shackle – 2 ton	11
Bow Shackle – ½ ton	8
Gunnebo Rotating Lifting Point – SWL 6.5 ton	2
Gunnebo Rotating Lifting Point – SWL 1 ½ ton	2
Wire Rope – 200m	1
I-Beam Clamp	3

1 ton Chain Hoist	6
<u>Circus Equipment</u>	
Trapeze	4
Hoop	2
Red Silk – 20m	2
Coat hanger	2
<u>Crash Mats</u>	
Nissen Crash Mat – Black 2.44m x 1.22m x 305mm	3
Nissen Crash Mat – Black 2.44m x 1.22m x 210mm	1
Nissen Crash Mat – Blue 2.44m x 1.22m x 210mm	1
<u>Fabric Walls</u>	
15m x 7m Permanently Rigged Practice Fabric Wall	1
6m x 6m Fabric Wall	1
<u>Lighting Equipment</u>	
MQ60 Chamsys 12 Universe Lighting Desk	1
Pulse Eco LED Par 56 Lighting Fixture	14
Par 16 – 15amp	2

## Contacts

### **Technical Director**

Jamie Ogilvie

[jamie@wiredaerialtheatre.com](mailto:jamie@wiredaerialtheatre.com)

+44 (0) 7766 058573

+44 (0) 151 2077568

### **Artistic Director**

Wendy Hesketh-Ogilvie

[wendy@wiredaerialtheatre.com](mailto:wendy@wiredaerialtheatre.com)

+44 (0) 7876 747613

+44 (0) 151 2077568

### **Technical Manager**

Joe Swain

[technical@wiredaerialtheatre.com](mailto:technical@wiredaerialtheatre.com)

+44 (0) 7438 300278

+44 (0) 151 2077568

### **Head Performer and Education Coordinator**

Daniela B Larsen

[education@wiredaerialtheatre.com](mailto:education@wiredaerialtheatre.com)

+44 (0) 151 2077568